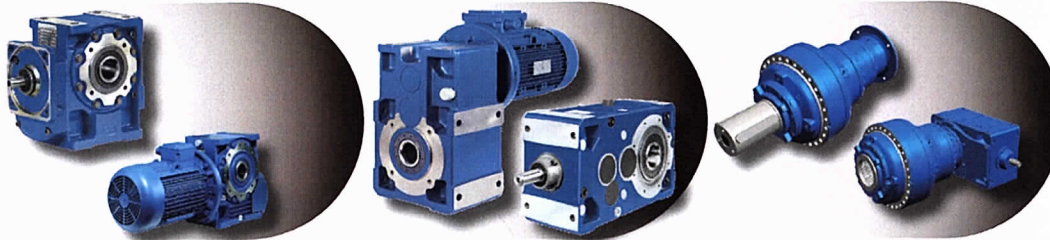
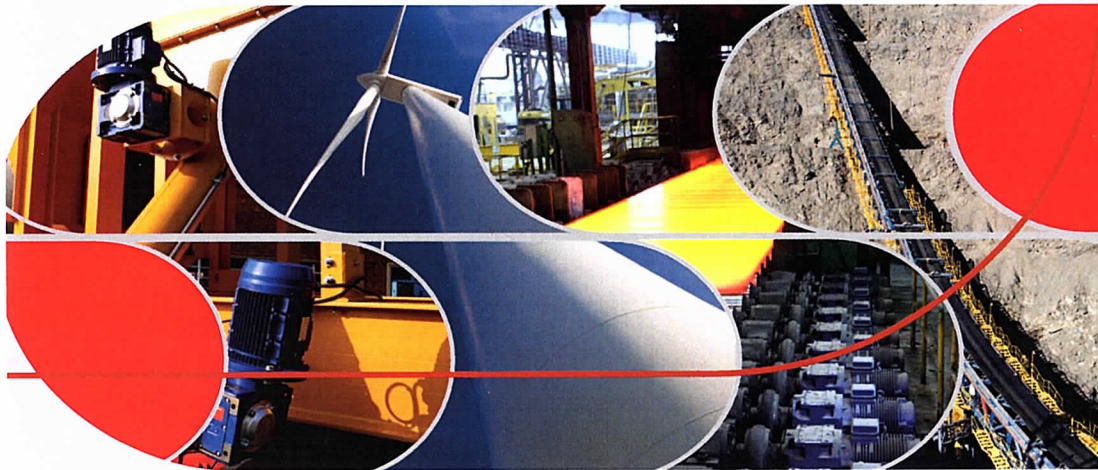


Product Overview



Who we are

In brief:

1953 Year of foundation as family business and today still privately owned



Rossi in the 70's

70's First in Italy to adopt a complete modular system for helical and bevel helical gear reducers; first in Italy to adopt case-hardened, tempered, ground gear pairs on helical and bevel helical gear reducers

80's Worm gear reducers and gearmotors with universal mounting, single-piece housing and ZI involute profile; extension of the direct sales organization abroad with the facilities of the German, English, French and Spanish subsidiaries.

90's Helical and bevel helical gear reducers and gearmotors with universal mounting and single-piece housing; first transmission manufacturer in Italy and second in Europe to obtain Quality System Certification ISO 9001.

1994 The only one to offer 3-year-warranty

1997 Acquisition of Seimec (Rossi Motor Division)

2002 Acquisition of SMEI (Rossi Planetary Gear Reducer Division, WIND)



Rossi Planetary Gear Reducer Division

2003 ISO 9001 – 2000 Standard (Vision 2000)

2004 New affiliated company in U.S.A.
Habasit acquires important share in Rossi, to reinforce global presence and develop growth strategy

2009 (July) Habasit Holding owns 100% Rossi

2010 Logo and Company name change: from "Rossi Motoriduttori S.p.A." to "Rossi S.p.A."



Rossi Industrial Gear Reducer Division, today

2011-13 New affiliated companies in Turkey, Poland and Southern Africa.

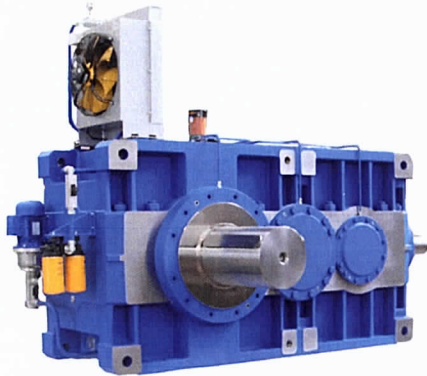
Launch of the new portal RossiForYou, allowing customers to select online gearboxes, to place orders and perform order tracking, to obtain a wide variety of information as well as receive invoices, etc. Rossi is near their customers 24/7, wherever and whenever...!

For more than 60 years we have been developing our business in the most demanding applications to become one of the world's leading gearmotor manufacturers suitable for critical machines. Even in the toughest environment, we are recognized for providing state of the art technology, solid value, and commitment to our customers.

HEAVY INDUSTRY PRODUCTS



HEAVY INDUSTRY PRODUCTS EP SERIES		
Size		4 sizes (125...3000)
Transmission ratio	i_N	18 ... 1,800



HEAVY INDUSTRY PRODUCTS H SERIES		
Size		15 sizes (400...1002)
Nominal torque	T_{N2}	87,5 ... 1,700,000 N m
Transmission ratio	i_N	8 ... 315

PLANETARY GEAR SYSTEMS



PLANETARY GEARMOTORS (IN LINE AND BEVEL) EP SERIES		
Size		23 sizes (001...710)
Power	P_1	0.18 ... 90 kW
Nominal torque	T_{N2}	1600 ... 710,000 N m
Transmission ratio	i_N	3.55 ... 3,550 (in line) 9 ... 2,240 (bevel)



SLEWING DRIVES EPS SERIES		
Size		13 sizes (100 ... 10,000)
Nominal torque	T_{N2}	1,500 ... 125,000 N m
Transmission ratio	i_N	50 ... 1,000



WIND DRIVES - YAW AND PITCH EPW SERIES		
Size		15 sizes (100 ... 10,000)
Nominal torque	T_{N2}	1,600 ... 125,000 N m
Transmission ratio	i_N	42.5 ... 3,150

MOTION CONTROL PRODUCTS



LOW BACKLASH PLANETARY SERVO GEAR REDUCER (COAXIAL) SM SERIES		
Size		5 sizes (57...181)
Nominal torque	T_{N2}	$\leq 1,200$ N m
Accelerating torque	T_{A2}	$\leq 1,750$ N m
Emergency torque	T_{E2}	$\leq 2,800$ N m
Transmission ratio	i	3 ... 50



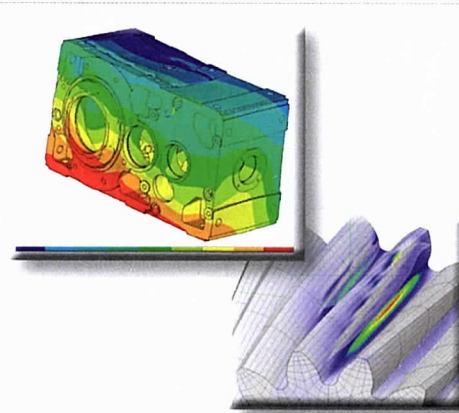
LOW BACKLASH PLANETARY SERVO GEAR REDUCER (PLANETARY-BEVEL GEAR UNITS) SM SERIES		
Size		3 sizes (84...143)
Nominal torque	T_{N2}	≤ 418 N m
Accelerating torque	T_{A2}	≤ 698 N m
Emergency torque	T_{E2}	$\leq 1,250$ N m
Transmission ratio	i	3.4 ... 50

Features and Benefits

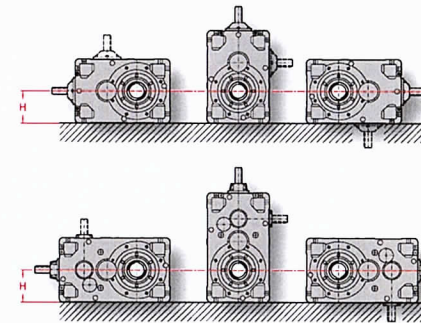
Cutting edge design, state of the art manufacturing process and safety deriving from our long expertise on the field:

- rational, modern and essential design
- cast iron single piece housing with high structural stiffness
- cylindrical and bevel gear pairs ground in a very high quality class and optimized geometry
- design and calculation of every single component
- high torsional rigidity and reduced angular backlash

- High and long lasting performance
- Smooth and quiet running
- Precision and repeatability of low speed shaft angular positioning

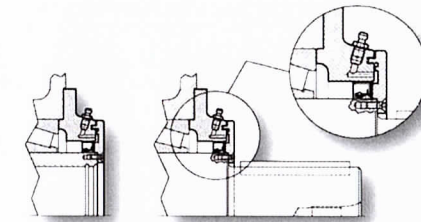


- Extensive use of the modular system: same installation dimensions (low speed shaft diameter, shaft height, foot dimensions, etc.) at the same gear reducer size and independently from the train of gears
- Thick and regular scaling of the product range
- Gearmotors with input coupling dimensions according to IEC standards



- Easy and economic application
- Freedom of selection for designers
- Certainty of the right economical choice
- Electric motor easily suppliable

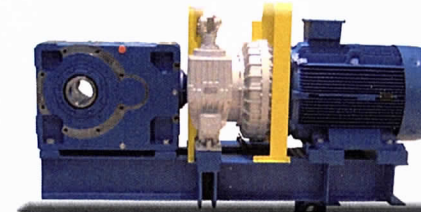
- Wide customization possibility (e.g.: low speed shaft designs, monitoring and sensors, reaction systems for shaft mounting, forced cooling systems, oil seal typologies, etc.)
- Maximum application flexibility



- Products easily customizable starting from a standard manufacturing program
- Easy and economic application
- Easy maintenance

Strong experience in the supply of complete drive units (cat. RE)

- Turn key drive units
- One partner just for every technical and commercial aspect
- Reduction of design time
- Simplification of installation on site
- Possibility of combined units with different Rossi products (e.g.: planetary)



Every decision we make at Rossi impacts the world we live in. But new technologies and renewed commitment to sustainable practices have provided us with the opportunity to make environmentally friendly printing decisions. Our catalogs are printed on Forest Stewardship Council™ (FSC®) certified paper (1), format A5, reducing paper waste. This is our tangible commitment in terms of environment sustainability.

⁽¹⁾ The certification means that finished wood-based products in the marketplace have been handled by companies that have also been certified and that the paper has been handled in an environmentally friendly manner. The inks used are water-based for greater environmental protection.



Australia

Rossi Gearmotors Australia Pty Ltd
e-mail: info_australia@rossi-group.com
www.rossi-group.com/australia

France

Rossi Motoreducteurs SARL
e-mail: info_france@rossi-group.com
www.rossi-group.com/france

New Zealand

Rossi Gearmotors New Zealand Ltd
e-mail: info_nz@rossi-group.com
www.rossi-group.com/australia

Taiwan

Rossi Gearmotors Co. Ltd
e-mail: info_taiwan@rossi-group.com
www.rossi-group.com/taiwan

Benelux

Rossi BeNeLux B.V.
e-mail: info_benelux@rossi-group.com
www.rossi-group.com/benelux

Germany

Rossi GmbH
e-mail: info_germany@rossi-group.com
www.rossi-group.com/germany

Poland

Rossi Polska Sp. z o.o.
e-mail: info_poland@rossi-group.com
www.rossi-group.com/poland

Turkey

Rossi Turkey & Middle East
e-mail: info_turkey@rossi-group.com
www.rossi-group.com/turkey

Canada

Rossi North America
e-mail: info_northamerica@rossi-group.com
www.rossi-group.com/northamerica

India

Rossi Gearmotors Pvt. Ltd.
e-mail: info_india@rossi-group.com
www.rossi-group.com/india

Spain Portugal

Rossi Motorreductores S.L.
e-mail: info_span@rossi-group.com
www.rossi-group.com/spain

United Kingdom

Rossi Gearmotors Ltd
e-mail: info_uk@rossi-group.com
www.rossi-group.com/unitedkingdom

China

Rossi Gearmotors China PTI
e-mail: info_china@rossi-group.com
www.rossi-group.com/china

Malaysia

Rossi Gearmotors South East Asia Sdn Bhd
e-mail: info_malaysia@rossi-group.com
www.rossi-group.com/malaysia

South Africa

Rossi Southern Africa
e-mail: info_southafrica@rossi-group.com
www.rossi-group.com/southafrica

United States, Mexico

Rossi North America
e-mail: info_northamerica@rossi-group.com
www.rossi-group.com/northamerica



Zwette 22
3209 BN Hekelingen

Tel. : 06-81479794
info@aandrijftechniekplus.nl

Product liability, application considerations

The Customer is responsible for the correct selection and application of product in view of its industrial and/or commercial needs, unless the use has been recommended by technical qualified personnel of Rossi, who were duly informed about customer's application purposes. In this case all the necessary data required for the selection shall be communicated exactly and in writing by the Customer, stated in the order and confirmed by Rossi. The Customer is always responsible for the safety of product applications. Every care has been taken in the drawing up of the catalog to ensure the accuracy of the information contained in this publication, however Rossi can accept no responsibility for any errors, omissions or outdated data. Due to the constant evolution of the state of the art, Rossi reserves the right to make any modification whenever to this publication contents. The responsibility for the product selection is of the customer, excluding different agreements duly legalized in writing and undersigned by the Parties.

Via Emilia Ovest 915/A
41123 Modena - Italy
Phone +39 059 33 02 88
fax +39 059 82 77 74
e-mail: info@rossi-group.com
www.rossi-group.com

Registered trademarks
Copyright Rossi S.p.A.
Subject to alterations
Printed in UK

